

## IEBELE ABEL

Divination assumes that reality consists of multiple levels (like the divine and the physical world), which in some manner mirror one other. Within this mode of thought, levels of reality outside the scope of the physical world can be captured by human mind because of their reflection in physical phenomena. This idea of correspondence is extremely widespread in all societies, from early history till recent times. Divinatory methods are typically used in situations in which morality, justice or health are central. Though divination is widely practiced in Western society, within the framework of contemporary science there is hardly theory supporting the idea of correspondence. Within the present time-space-causality mode of thought, correspondence between the human psyche and physical systems outside the body are considered as anomalous phenomena. Scientific research however indicates that anomalous correspondence takes place in controlled experimental settings. Evidence for correspondence between human psyche and the physical world, reiterate metaphysical contemplations on God, world and soul. The Dutch artist and researcher Iebele Abel has developed a divinatory musical system to investigate if and how anomalous correspondence can be applied to evoke exceptional (psychic) experiences. This visual and musical system is based on methods and technologies within the framework of contemporary scientific and artistic thought, and may therefore contribute in our understanding how and if human mind can capture, interpret and express information from different levels of reality, if any. Iebele Abel is an artist and PhD researcher at the Institute of Philosophy, Leiden University. He works and lives in The Hague (Netherlands) and Patmos (Greece).

### WEBSITES

[www.iebele.nl](http://www.iebele.nl)

### LID VAN BEROEPS- / KUNSTENAARSVERENIGING

Pulchri

### OPLEIDINGEN

1993 video-film Academie voor Beeldende Vorming, Tilburg Diploma behaald

### TENTOONSTELLINGEN

2009 Pulchri Studio Nature and the Law of Consciousness  
[Solo](#)

2008 Pulchri Studio Mind over Matter, de eerste beelden uit de serie  
[Solo](#)

2005 Studio Lissabon Beeldend werk 1992-2001  
[Solo](#)

2004 Het Bewustzijn van een Park  
Geluidperformance in park Ockenburgh  
[Solo](#)

2002 Licht und Schatten Deutsches Architektur Museum Frankfurt  
[Groep](#)

2002 Digital Exposure 3 Vrije Akademie Den Haag  
[Groep](#)

2001 Digital Exposure 2 Vrije Akademie Den Haag  
Groep

## INTERNATIONALE UITWISSELINGEN / ARTIST-IN- RESIDENCIES

2011 Patmos, Griekenland

2009 International Consciousness Research Laboratories, Princeton, USA

## OPDRACHTEN

2006 Ministerie van Binnenlandse Zaken Den Haag Ontwerp kunstwerk binnenruimte NCC

2003 Centraal plan buro, Den Haag Den Haag schetsopdracht

2003 Dienst Stedelijke Ontwikkeling Den Haag Ontwerp verlichtingsplan Lange Voorhout

## PUBLICATIES

2010 Talks about Mind over Matter, full-color American Edition Elmtree&Waters Publishers Boek, 148 pagina's, gebonden, full color

2009 Talks about Mind over Matter Elmtree&Waters Publishers Boek, 160 pagina's, gebonden, full color

2008 Mind over Matter, paranormale verkenningen in kunst en wetenschap Pulchri Studio Artikel over recent werk van lebele Abel

2008 The first works in the series Mind over Matter Elmtree&Waters Publishers Boek, 20 pagina's, gebonden, full color

2007 De Universele Wetten van Kosmisch Bewustzijn Public media, Den Haag - ISBN 978-90-808940-2-0 Boek, 128 pagina's, genaaid, gebonden

2006 13 Moon Music Public media, Den Haag - ISBN 978-90-808940-2-0 Meditatieve seriële muziek

2004 Body in Resonance Public media, Den Haag - ISBN 978-90-808940-2-0 Ontspanningsmuziek

2002 Licht und Schatten Deutsches Architektur Museum, Frankfurt

## ARTISTIEKE NEVENACTIVITEITEN

2010 - PhD researcher, Institute of Philosophy, Leiden University

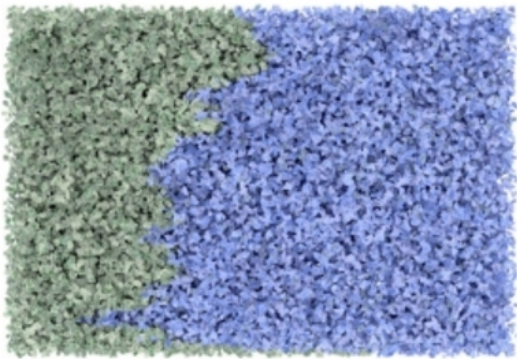
2004 - Voorzitter bestuur stichting Stralingbewust 2005

2004 - Eigenaar uitgeverij Public Media Den Haag 2008

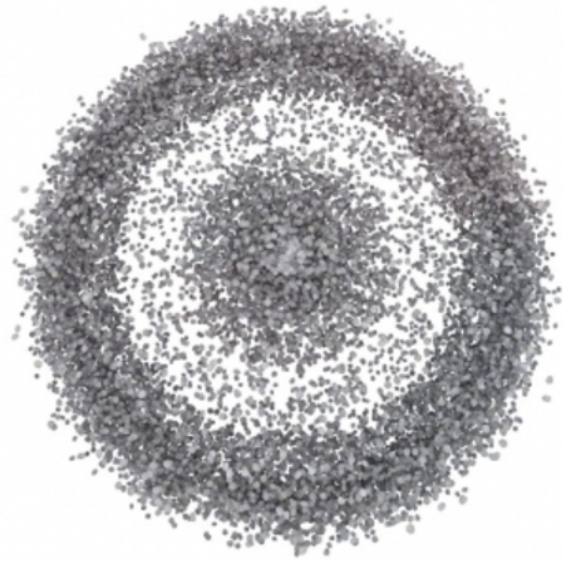
2002 - Vrije Akademie, Den Haag 2005

2000 - Voorzitter stichting Filmstad, Den Haag 2004

Tentoonstellingscatalogus



A strong focus on blue at the right, 2008  
photographic print on dibont, framed, 112x112



Deviation from a standard distribution, 2008  
photographic print on dibont, framed, 112x112



Vallende bladeren (Bougainville), 2008  
photographic print on dibont, framed, 112x112



13 Moon Music, 2006  
Audio cd + boekje, nvt



Consciousness Matter, 2006  
Ilfochrome op glas, 11000x2000



Het bewustzijn van een park, 2004  
Geluidsperformance/installatie, 40000x20000



langste dag in de studio, 1999  
cgi, 90x90x110



Equator #35, 1998  
fotografie, 40x45